



NEVADA SHARED RADIO SYSTEM DESIGN – POOR COVERAGE AREAS AND NEW SITES

April 20, 2018

800 MHz

Joint Operating Committee



WCRCS – Poor Coverage Areas

- As part of the NSRS design process Washoe County is considering areas of poor radio coverage.
 - Anecdotal evidence of poor coverage is validated by coverage models OR Vice Versa.
- New radio sites are a solution to reduce areas of poor coverage in and adjacent to populated areas.



Galena High and adjacent neighborhood; Franktown



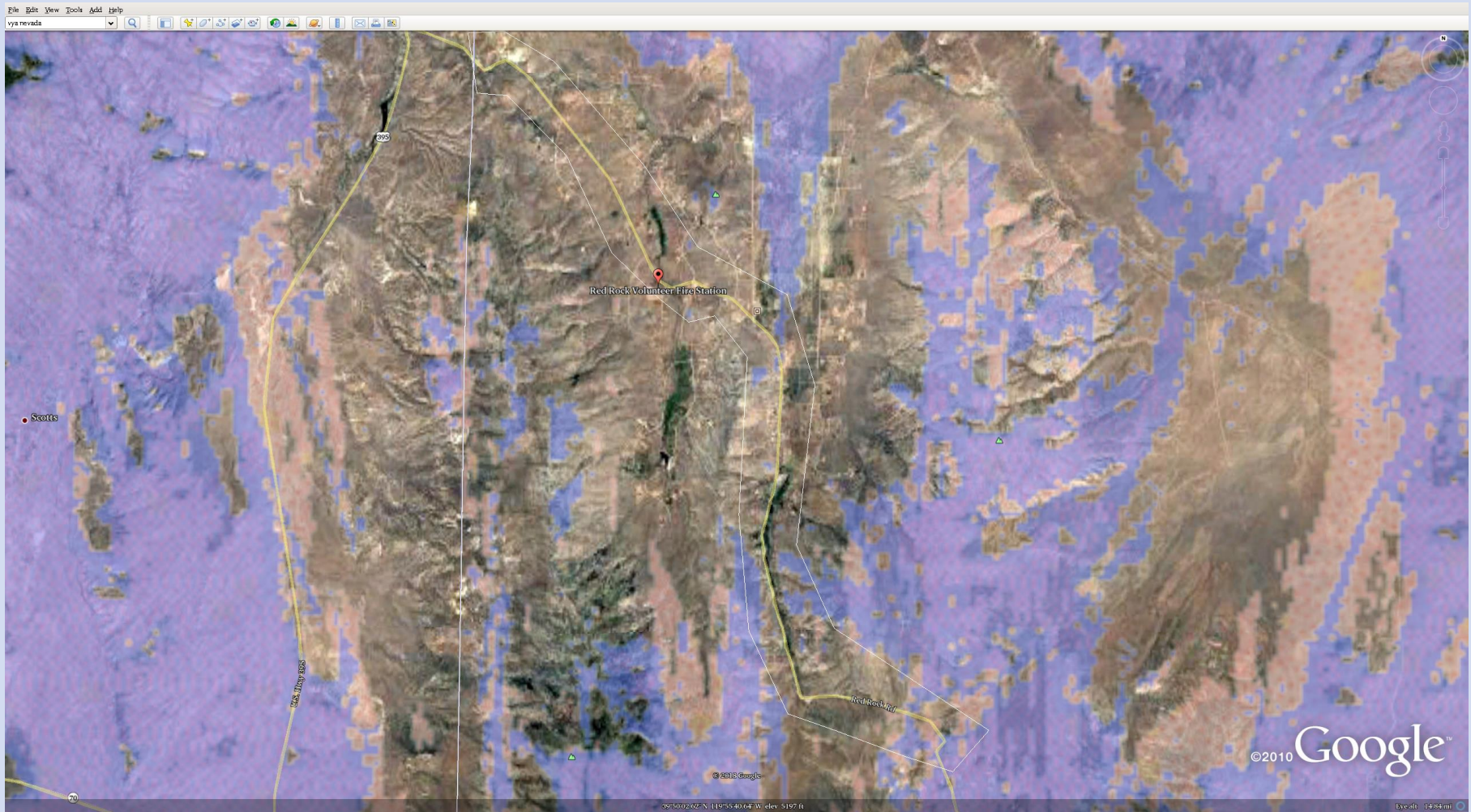


Golden Eagle Park and Future Development



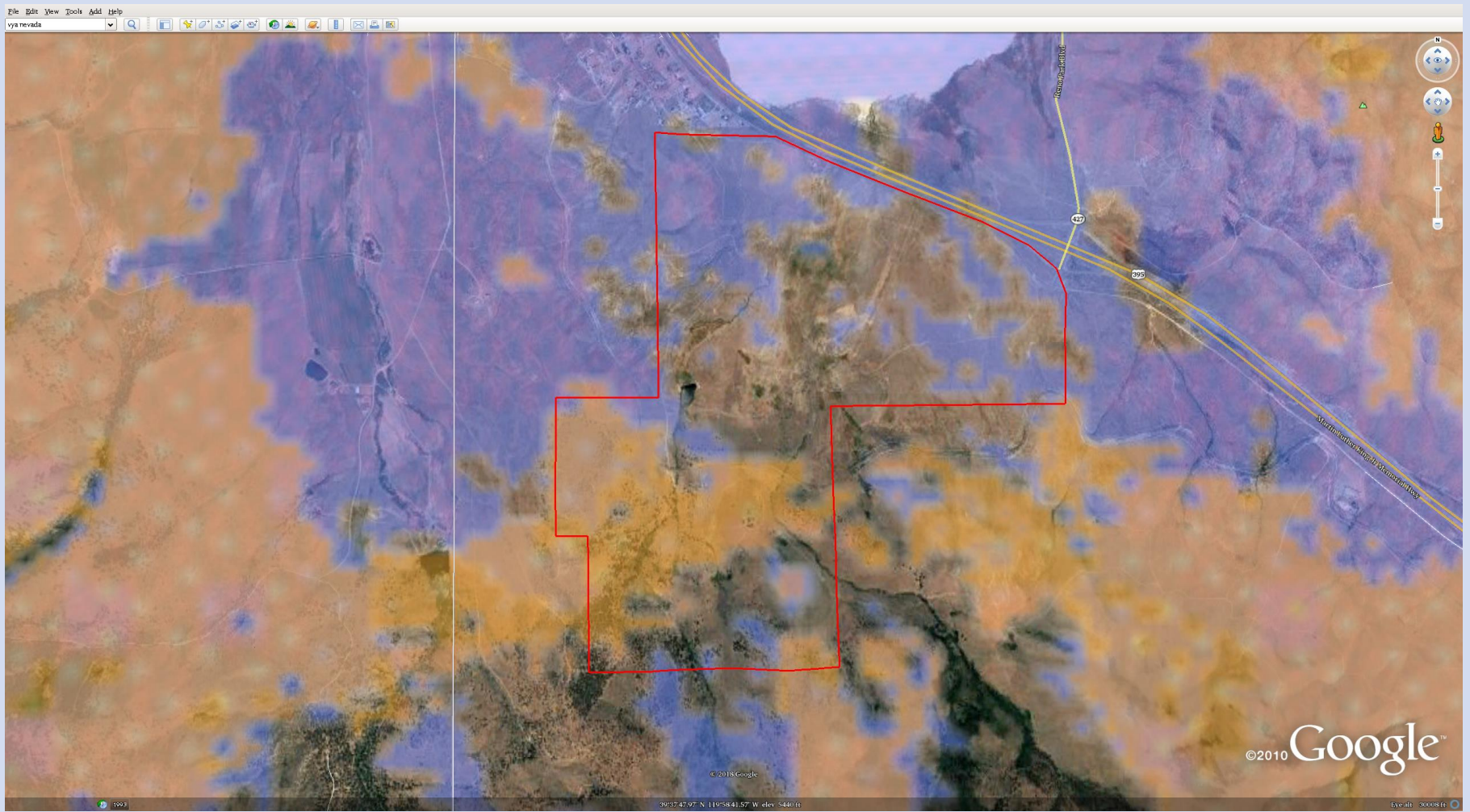


Red Rock – Rancho Haven



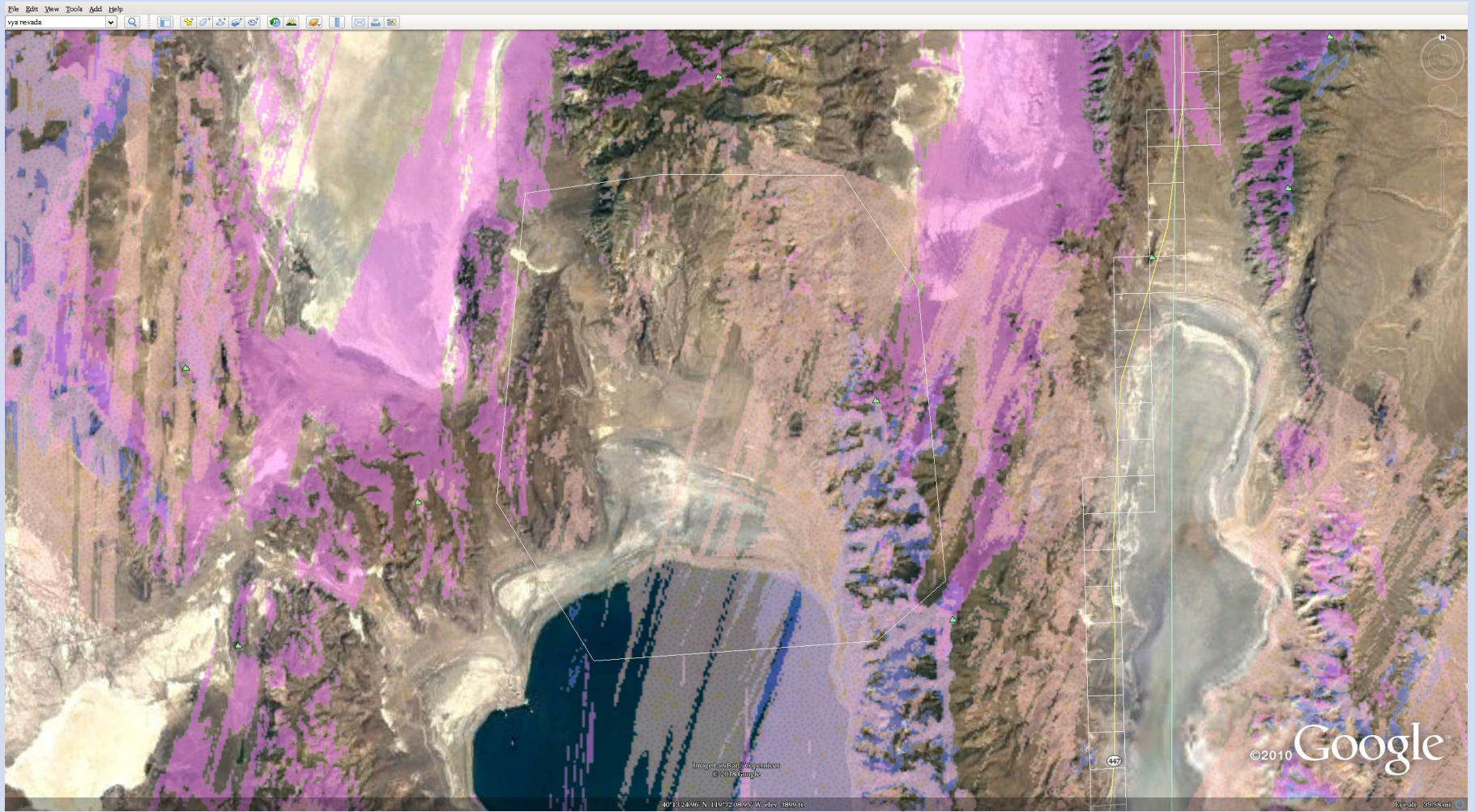


Stonegate



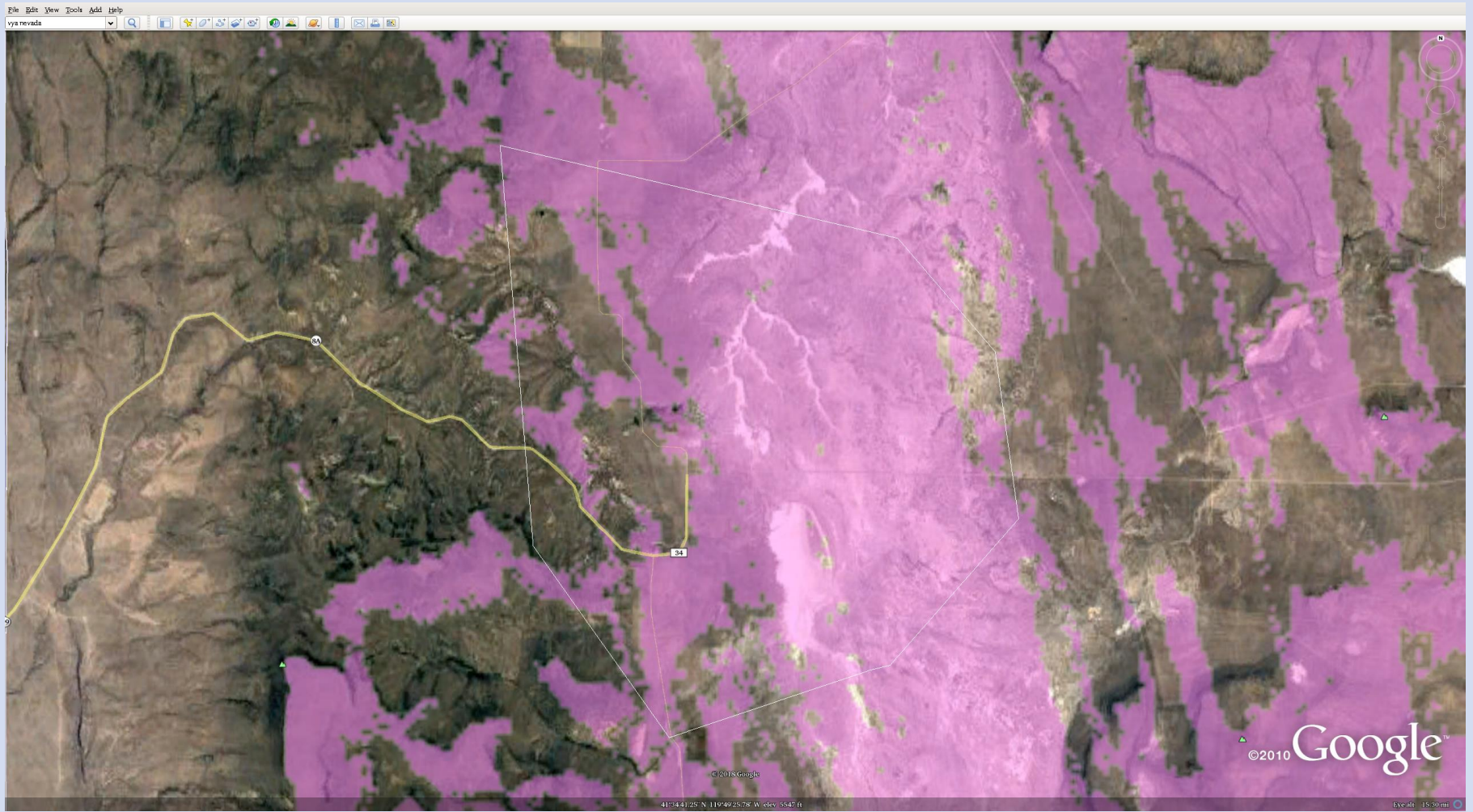


Northern Pyramid lake





Vya





Next Steps

- Washoe County (WC) has provided candidate sites to Harris Corp. for modeling.
 - No site for Stonegate.
 - Possible Red Peak move.
 - When modeling is complete WC will assess results to confirm areas of poor coverage are addressed.
- *Greenfield sites add substantially to the cost of the new radio system.*
- *JOC: Provide input on areas of poor coverage.*
 - *Possible action: Request agency input on areas of poor coverage.*